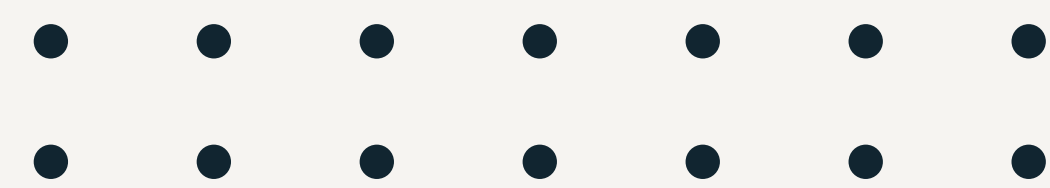
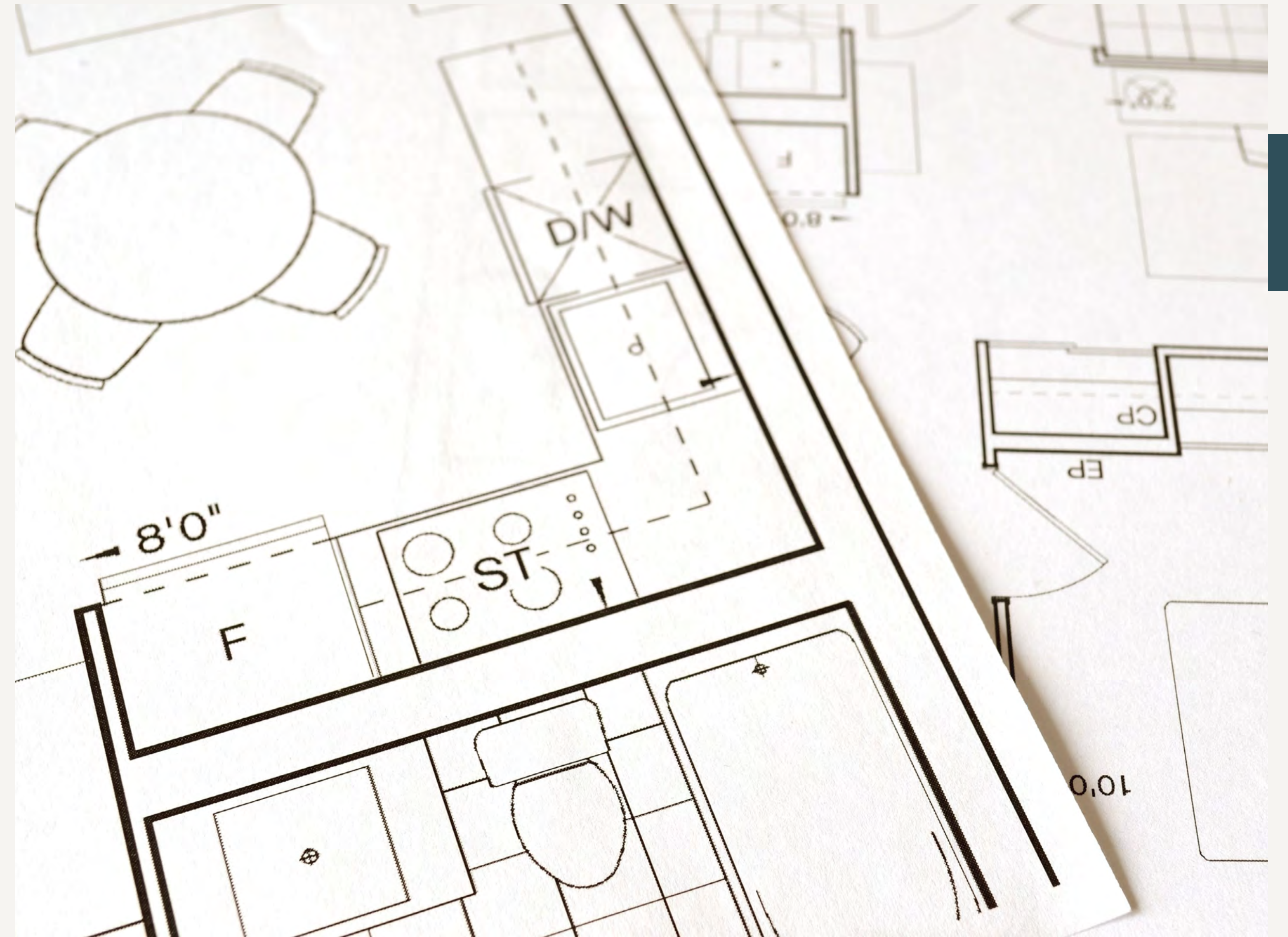
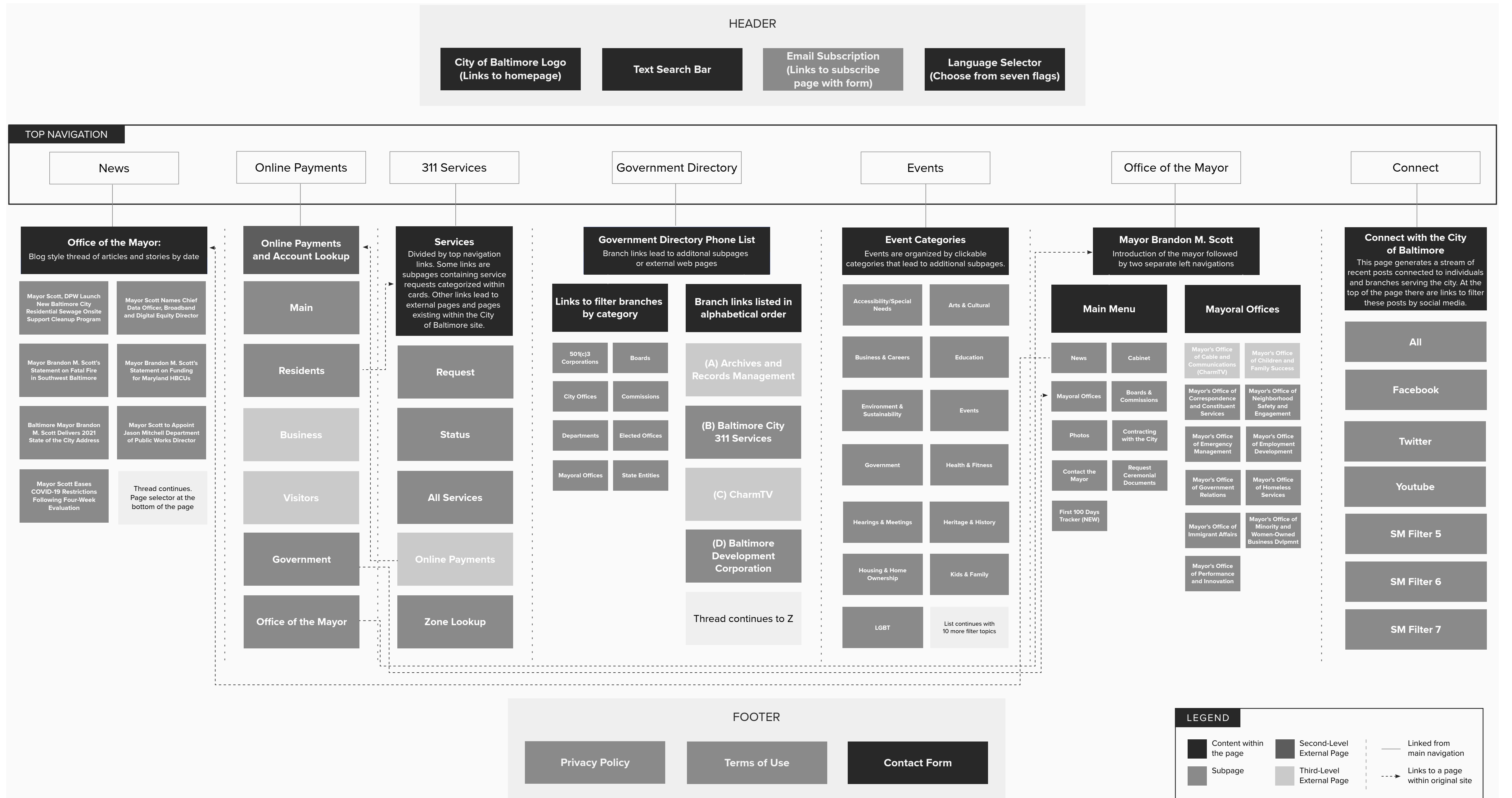


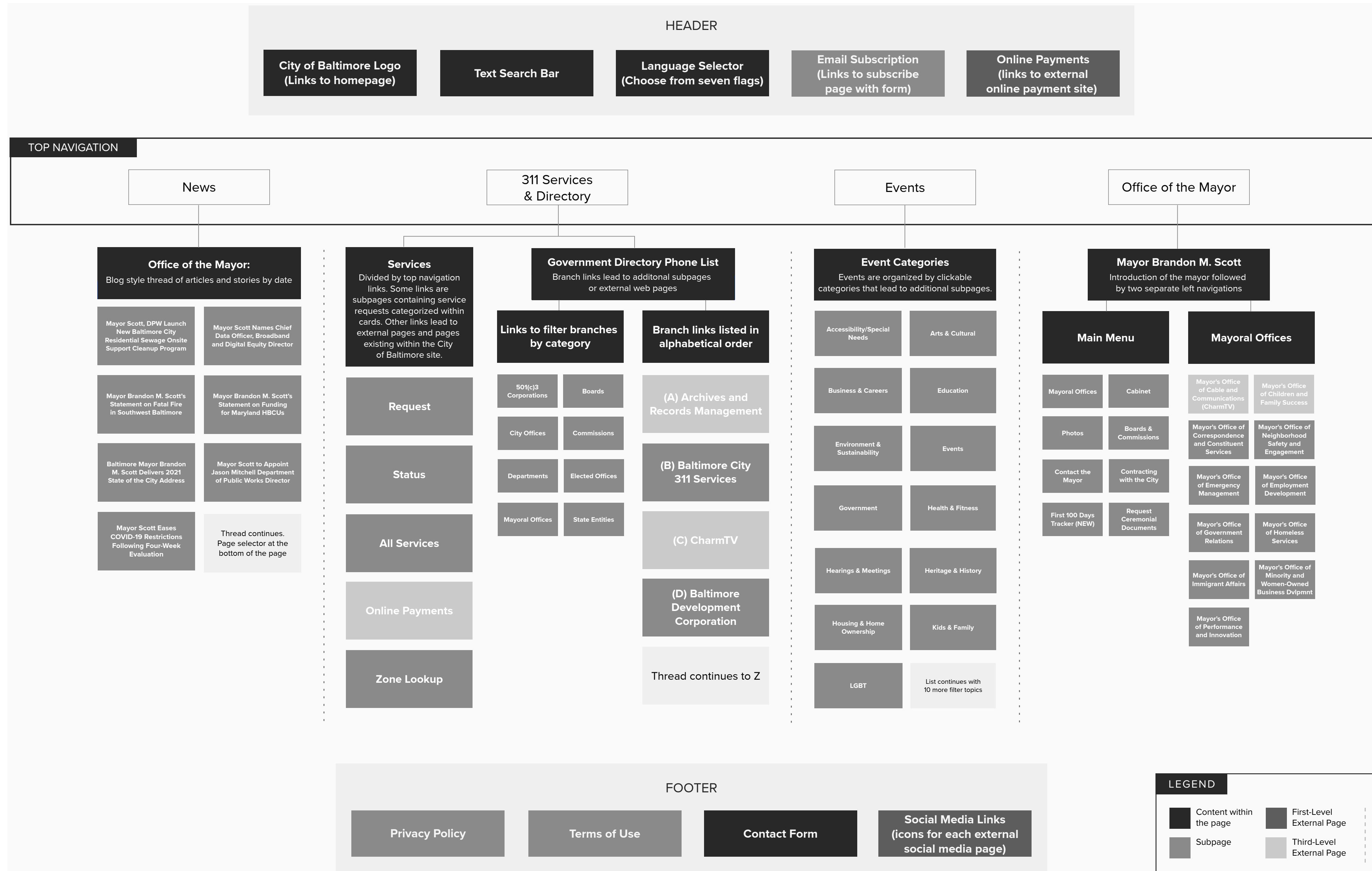
Site Map: City of Baltimore



SOLA AWOJODU

Baltimorecity.gov Current Site Map





Site Map Conclusion

After familiarizing myself with the City of Baltimore's current site IA, I rearranged some of the site's content to create a more manageable structure and flow.

I limited some of the redundancy within the site by moving "Online Payments" to the header. "Online Payments" is important for the users of the site to access, but felt awkwardly placed in the top navigation. I decided to move "Online Payments" to the header since it links to an external website. That way, it's one of the first things users see but does not disrupt the flow of the top navigation content. Considering its importance, I maintained "Online Payments" within the services page, just in case users miss it in the site header.

Additionally, I kept "News" in the top navigation of the site, but removed it from the "Office of the Mayor" page because I believe it is significant enough to stand alone. Each "News" subpage and article clearly communicate that the articles are published by the office of the mayor.

To group similar content categories and limit the number of pages in the top navigation, I decided to combine "311 Services" and "Directory" into one page that eventually divides into two subpages. Furthermore, I removed the "Connect" page entirely, replacing it with social media links placed in the site's footer.

Altogether, my goal in developing a new Information Architecture was to limit the redundancy within the City of Baltimore's website, solidify the purpose of each top navigation page, eliminate unnecessary pages and paths, and make navigating the site a smoother experience.

